

T.E.T.®

THESE = THOSE



Speed Spray Power Cleaner

Our toughest spray and wipe
multi-use cleaner

- Powerful Non "Butyl" Formula
- Safe on all washable surfaces
- Rinse free

Toughest heavy-duty cleaner that quickly removes black heel marks, betadine, price stickers, crayon, ink, grease and food soils.

DANGER

See back panel for additional precautions and first aid.

NET 64 FL. OZ. (1892 mL)



FRANKLIN
CLEANING TECHNOLOGY

ULTRA

CONCENTRATE

makes up to
**32 Spray
Bottles**



No Decision Mixing

F379019

PMS 266

PMS 402

BLACK

10

10

10

10

10

10

10

PMS 266
PMS 402
BLACK

T.E.T.[®]

THESE = THOSE



Speed Spray Power Cleaner

Our toughest spray and wipe multi-use cleaner

10 10 10 10 10 10

DIRECTIONS:

NOTE: Prior to use, this product must be diluted. Dilution strength should be according to product cleaning and local VOC restrictions. For heavy soils like adhesives and tar use 8 oz. per 32 oz. quart bottle (1:4 ratio). For medium soils such as spot/stain removal or as an engine degreaser use 4 oz. per 32 oz. quart bottle (1:8 ratio). For spray and wipe cleaning of light soils or use as a general degreaser use 1/2 oz. per 32 oz. quart bottle (1:64 ratio).

DANGER

Combustible liquid. Harmful if swallowed. Causes severe skin burns and eye damage. Causes serious eye damage. Harmful to aquatic life. Harmful to aquatic life with long lasting effects.

Prevention

Keep away from heat / sparks / open flames / hot surfaces. No smoking. Do not breathe mist or vapor. Wash thoroughly after handling. Do not eat, drink or smoke when using this product. Avoid release to the environment. Wear protective gloves / protective clothing / eye protection / face protection

Response

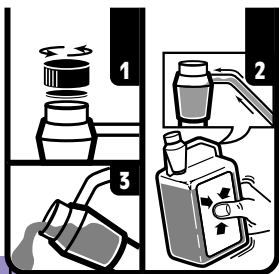
If swallowed: Rinse mouth. Do NOT induce vomiting. If on skin (or hair): Take off immediately all contaminated clothing. Rinse skin with water / shower. If inhaled: Remove person to fresh air and keep comfortable for breathing. If in eyes: Rinse cautiously with water for several minutes. Remove contact lenses, if present and easy to do. Continue rinsing. Immediately call a poison center / doctor. Specific treatment (see SDS). Wash contaminated clothing before reuse. In case of fire: Use appropriate media to extinguish.

Storage

Store in a well-ventilated place. Keep cool. Store locked up.

Disposal

Dispose of contents/container in accordance with local / regional / national / international regulations.



1. remove cap and seal
2. squeeze bottle and
3. pour into quart bottle

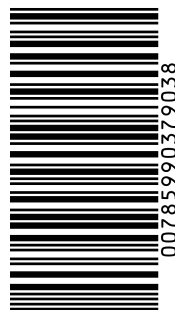
Franklin Cleaning Technology
One Fuller Way
Great Bend, KS 67530
United States
CHEMTREC (800) 424-9300
Emergency (620) 792-1711
24 hour Emergency (800) 424-9300
www.fullercommercial.com



KEEP OUT OF REACH OF CHILDREN

INGREDIENTS: Water (7732-18-5), Dipropylene Glycol n-Butyl ether (29911-28-2), Dipropylene glycol methyl ether (34590-94-8), Monoisopropanolamine (78-96-6), Undeceth-7 (34398-01-1).

FOR INDUSTRIAL USE ONLY



F379019-0315