

# 3v6™

## Hard Floor Coating

Formulated with VSP™ Technology



- Low Odor
- Fewer Coats Required
- Brilliant Initial Gloss
- Superior Soil & Scratch Resistance
- Extended Life Cycle

# FULLER PROFESSIONAL

**3v6™ Hard Floor Coating formulated with VSP™ Technology** provides superior initial gloss and dramatically extends the life cycle with fewer coats of product on the floor. VSP™ proprietary coatings more effectively penetrate pores in floor substrates providing a smooth, glass-like, ultra durable and soil resistant film, which dramatically reduces soil embedding and retention.

3v6™ is very low odor and performs excellent in many maintenance programs. Your floors will stay cleaner longer. As a result of the enhanced durability of 3v6™, strip cycles can be extended to 24-36 months without sacrificing appearance by following the recommended procedures. Excellent for use in education, health care facilities, retail stores, office buildings, and government buildings.

#### **24-36 Month Life Cycle Maintenance:**

1. Apply 4-6 coats of 3v6™ allowing 20-30 minutes of drying time between coats. \*\*

Note: Do not apply more than 4 coats in a 24 hour period

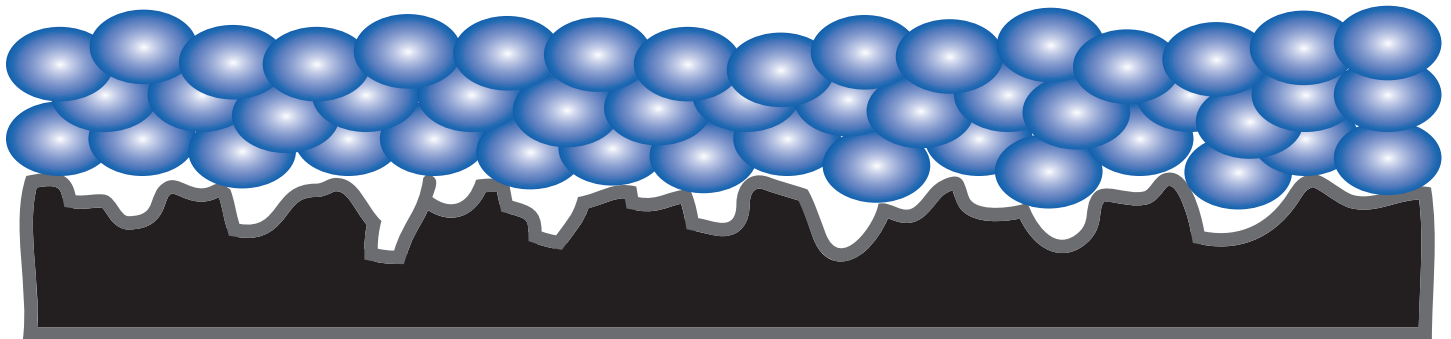
2. Strictly follow Routine Maintenance Program (below).

\*\* Due to differences in temperature and humidity, actual drying time may vary.

#### **Routine Maintenance:**

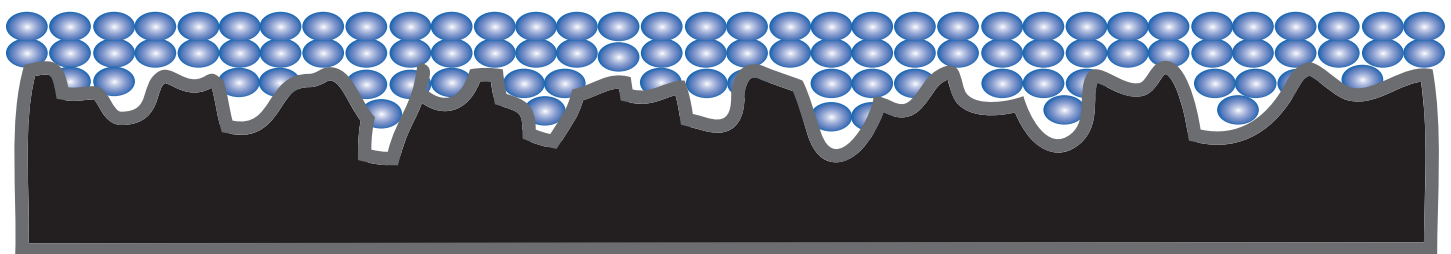
1. Dust mop, damp mop and sweep as needed.
2. Autoscrub daily using NuShine UHS Cleaner / Restorer following label instructions.
3. Burnish using a light hair pad at least once per week.
4. Thoroughly scrub and recoat worn areas every 4-6 months with 3v6™ to maintain foundation as needed.

## **- Surface Comparison -**



### **Traditional Floor Finish**

- Rough surface
- Traps and holds soil
- Hard to clean effectively
- Reduced gloss
- Weaker, less durable film
- Shortened finish life



### **3v6™ Hard Floor Coating with VSP™ Technology**

- Glass-like, smooth surface
- Improved soil resistance
- Stays cleaner, longer
- Improved gloss
- Stronger, more durable film
- Extended coating life